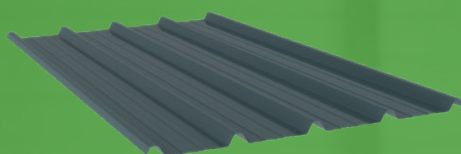


**PRODUCT DATA SHEET**

**REX 33.250.1000**

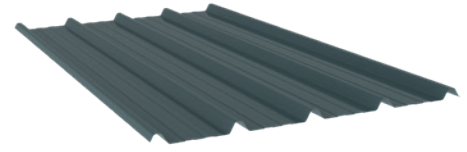


# PRODUCT DATA SHEET

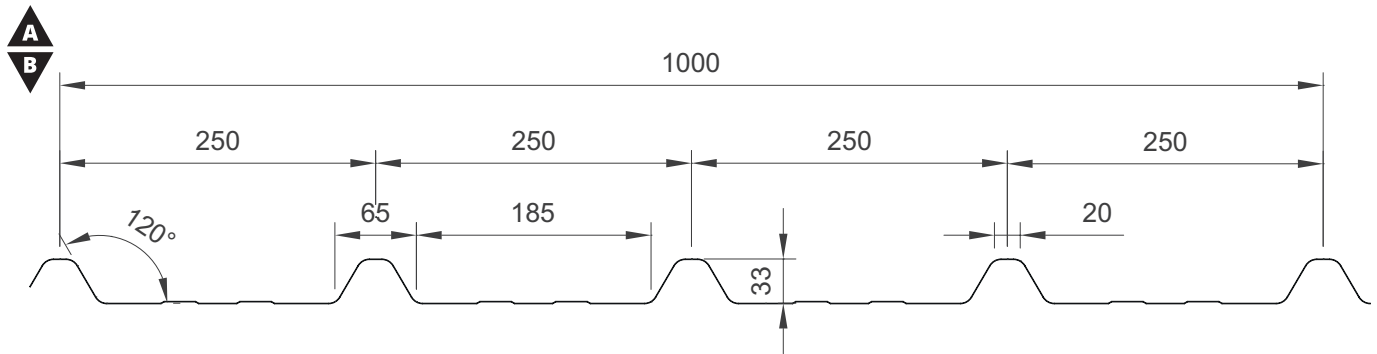
REX **33.250.1000**

## APPLICATIONS

The 33.250.1000 profiled sheet is a trapezoidal sheet suitable for use on sloped roofs. The profiling of this product is identical to the outer sheet of the ROOF 4 panels range and therefore fits in seamlessly with this product.



## SECTION



## PROPERTIES

Thickness [D]	Weight
[mm]	[kg/m <sup>2</sup> ]
0,50	4,8
0,63	6,0
0,75	7,2

## Fire

Property	Standard	Certification Standard	Result	Field of application
<b>Reaction to Fire</b>	EN ISO 11925-2:2010 ignitability	EN 13501-1:2007 Fire classification of construction products and building elements - Part 1	B/C-S2-D0*	All thicknesses
	EN 13501-1:2017 reaction to fire			
<b>External Fire Performance</b>	CEN/TS 1187	2006/600/EC	B <sub>ROOF</sub> (t <sub>1</sub> , t <sub>2</sub> en t <sub>3</sub> )	All thicknesses

\*Depends on coating choice



## Environmental

For further information on environmental issues please contact the sales department of REX Panels & Profiles.

# PRODUCT DATA SHEET

REX **33.250.1000**

## MEASUREMENTS

### Available lengths

Standard lengths	600 to 13600 mm
Longer lengths*	13600 to 23000 mm
Shorter lengths*	Below 600 mm

\*Non-standard lengths are available on request and subjected to a surcharge

### Tolerances

Length	L ≤ 3000 mm	-5 mm	+5 mm
	L ≥ 3000 mm	-10 mm	+10 mm
Cover width		-5 mm	+5 mm
Squareness		-5 mm	+5 mm

Other product- and materialtolerances according EN 14782:2006

## MATERIALS

The profiled external sheet is standard available in the following materials and coating systems.

Coating*	Steel	Thicknesses**		
		0,5	0,63	0,75
Polyester 25 mu	Galvanised Steel quality S280 GD or better	■	■	■
Plastisol 200 mu		■	■	■
REX PUR 60 mu		■	■	■

\*Available colors according standard colorchart which is available on request

■ = standard available

\*\*Other coatings / thicknesses on request available

### Anti-condensation membrane

The profile plates from REX are available with an anti-fog membrane. The fleece layer is applied to the bottom of the profile plates. The temporarily occurring condensate can be stored in this layer. In general, this non-woven layer prevents dripping and gives the absorbed moisture back to the environment during drier conditions.

### QUALITY AND GUARANTEE

#### Quality

The REX profiled sheets are CE marked according to EN14782:2006. The quality of our products is under FPC (Factory Production Control) continuously monitored in our own test laboratory. These procedures are secured under ISO9001.

#### Certification

The REX profiled sheets can be supplied including the following certificates / quality marks:



#### Guarantee

All products from REX Panels & Profiles come with a standard 10-year product warranty. An extended warranty is available on request under certain conditions. Some coating systems offer an additional (longer) guarantee on the durability of the external and / or internal sheet. For more information or the warranty conditions you can consult the website or contact our sales department.

### PACKAGING AND TRANSPORT

#### Packaging

The REX profiled sheets are stacked on pallets to create solid and manageable bundles.

#### Transport

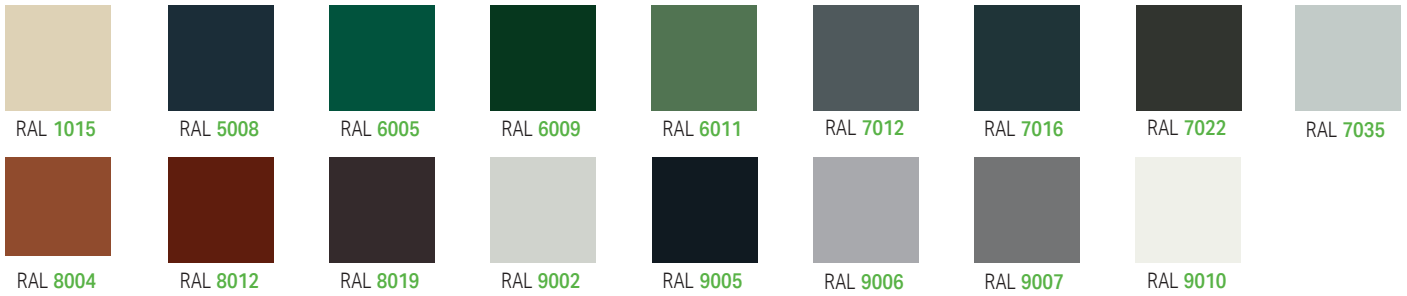
All deliveries are made via standard road transport to the construction site (maximum standard length 13600 mm). The trucks must be unloaded by the customer with suitable lifting equipment. Transport of longer lengths (up to 23000 mm) and / or self-unloaders is also possible on request.

# PRODUCT DATA SHEET

REX **33.250.1000**

## COLOR CHART

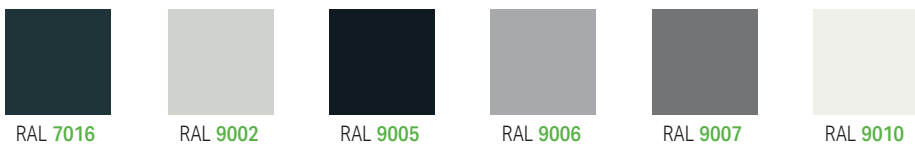
### Polyester 25 µ in 0,5/0,63 mm



### Polyester 25 µ in 0,75 mm



### REXPUR 60 µ in 0,5/0,63/0,75 mm



### Plastisol 200 µ in 0,5 /0,63 mm



### Rooftile colors in polyester 25 µ / 0,5 mm



### Rooftile colors in 40 µ mat / 0,5 mm



### Rooftile colors in plastisol 200 µ / 0,5 mm





**LOCATION 1**

Z.I. Tournai Ouest  
Rue du mont des Carliers 4  
7522 Blandain  
VAT BE 0473.823.026

**LOCATION 2**

Z.I. Tournai Ouest  
Rue du Grand Carex 7  
7503 Froyennes  
VAT BE 0473.823.026

**CONTACT**

T: +32 69 44 66 80  
F: +32 69 44 66 81  
E: [info@rexpanels.com](mailto:info@rexpanels.com)