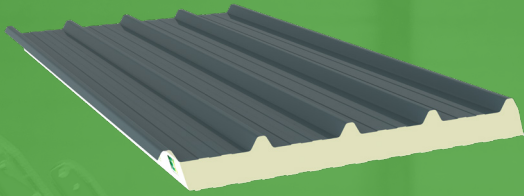


**PRODUCT DATA SHEET**

REX SDW **ROOF 4**

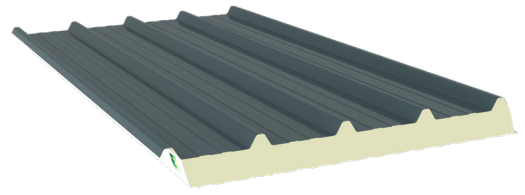


# PRODUCT DATA SHEET

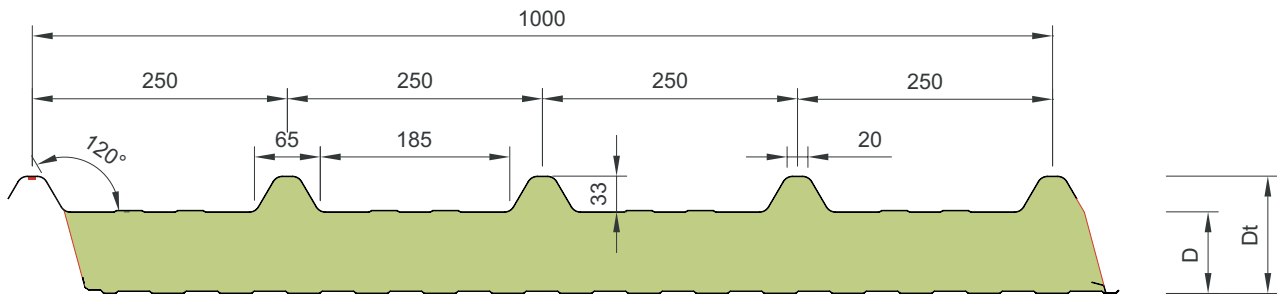
## REX SDW ROOF 4

### APPLICATIONS

The REX SDW ROOF 4 sandwich panel has a steel trapezoidal profiled external sheet and a light linear profiled steel internal sheet. The rigid foam core is standard made of PIR (Polyisocyanurate) and this product can be used for building with roof pitches of 4° or more after deflection.



### SECTION



### PROPERTIES

Thickness [D]	Overall Thickness [Dt]	Weight	U-value
[mm]	[mm]	[kg/m <sup>2</sup> ]	[W/m <sup>2</sup> .k]
30	63	7,0	0,61
40	73	7,4	0,48
50	83	7,8	0,40
60	93	8,2	0,34
70	103	8,6	0,30
80	113	9,0	0,25
90	123	9,4	0,23
100	133	9,8	0,20
110	143	10,2	0,18
120	153	10,6	0,16
130	163	11,0	0,15
160	193	12,2	0,13

The mentioned insulation values in this table are based on calculations according NEN-EN14509:2013

# PRODUCT DATA SHEET

## REX SDW ROOF 4

### Fire

Property	Standard	Certification Standard	Result	Field of application
<b>Reaction to Fire</b>	EN ISO 11925-2:2010 ignitability	EN 13501-1:2007 Fire classification of construction products and building elements - Part 1	B-S1-D0	All thicknesses
	EN 13501-1:2017 reaction to fire			
<b>Fire resistance</b>	EN1365-2: determining the fire resistance of roof constructions	EN 13501-2:2007 Fire classification of construction products and building elements - Part 2	REI30, RE120	> 100 mm thickness
<b>External Fire Performance</b>	CEN/TS 1187	EN14509:2013 & 2006/600/EC	B <sub>ROOF</sub> (t <sub>1</sub> , t <sub>2</sub> and t <sub>3</sub> )	All thicknesses



### Environmental

For further information on environmental issues please contact the sales department of REX Panels & Profiles.

### Air Leakage

When correctly installed the air leakage of the REX SDW ROOF 4 sandwich panels is approx. 4,6 m<sup>3</sup>/hour/m<sup>2</sup> @ 50 pa. Under normal environmental conditions this is tight enough to prevent condensation or unacceptable air leakage. If necessary (i.e. coldstore applications) the airtightness can be improved by gun applied sealing the panel to panel joints using silicon mastic.

### Acoustic

Indicative octave band sound Insulation Index (R) in [dB] / [Hz]							
63	125	250	500	1000	2000	4000	8000
17	18	24	23	24	37	38	42
The weighted Sound Reduction Index (SRI) of sandwich PIR roof panels is approx. <b>25 dB(A)</b>							

# PRODUCT DATA SHEET

## REX SDW ROOF 4

### MEASUREMENTS

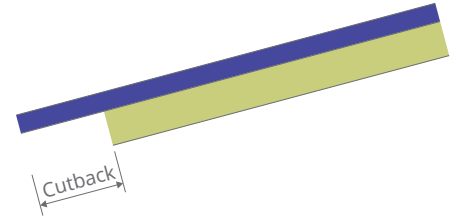
#### Available lengths

Standard lengths	2500 to 13600 mm
Longer lengths*	13600 to 21300 mm
Shorter lengths*	Below 2500 mm

\*Non-standard lengths are available on request and subjected to a surcharge

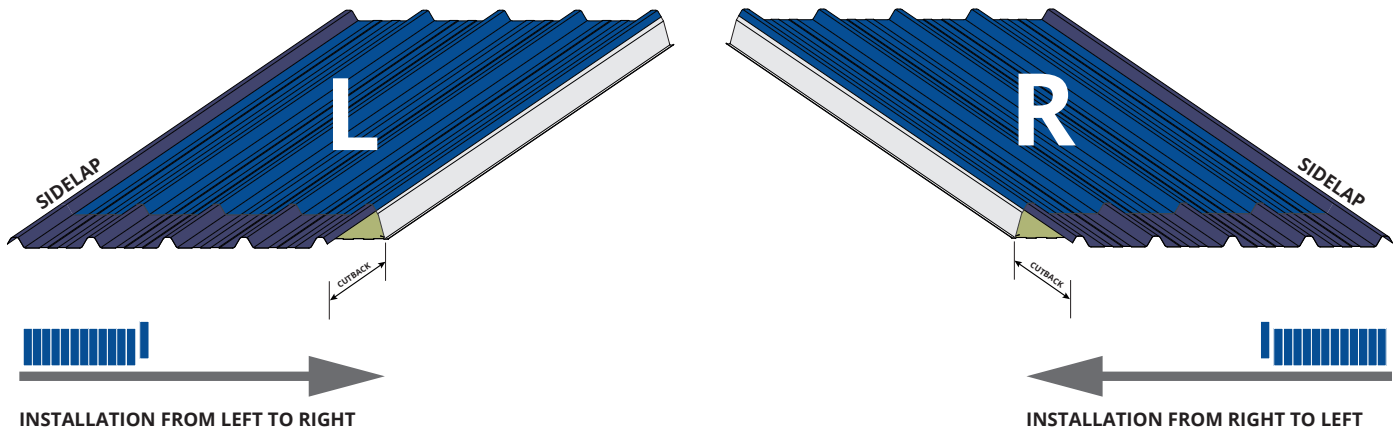
#### Panel End Cut Back

Standard Cut Back Eaves	100 mm
Standard Cut Back Endlap	200 to 300 mm
Minimum Cut Back	2 mm
Maximum Cut Back	350 mm



#### Orientation

Sandwich roof panels can be installed from left to right or from right to left. REX SDW ROOF 4 panels are standard produced and supplied with a sidelap on the right (see illustration). If a different installation direction is required this can be mentioned during the order process.



#### Tolerances

Length	$L \leq 3000$ mm	-5 mm	+5 mm
	$L \geq 3000$ mm	-10 mm	+10 mm
Thickness	$D \leq 100$ mm	-2 mm	+2 mm
	$D \geq 100$ mm	-2%D	+2%D
Cover width		-2 mm	+2 mm
Squareness		-6 mm	+6 mm

Other product- and material tolerances according EN14509:2013



# PRODUCT DATA SHEET

## REX SDW ROOF 4

### MATERIALS

#### Core material

The REX SDW ROOF 4 sandwich panels are produced with a high quality PIR (Polyisocyanurate) core material with a density of 40 kg/m<sup>3</sup>.

#### External sheet

The profiled external sheet is standard available in the following materials and coating systems:

Coating*	Steel	Thicknesses**	
		0,5	0,63
Polyester 25 mu	Galvanised Steel quality S280 GD or better	■	■
Plastisol 200 mu		■	■
REX PUR 60 mu		■	■

\*Available colors according standard colorchart which is available on request ■ = standard available

\*\*Other coatings / thicknesses on request available

#### Internal sheet

The profiled internal sheet is standard available in the following materials and coating systems:

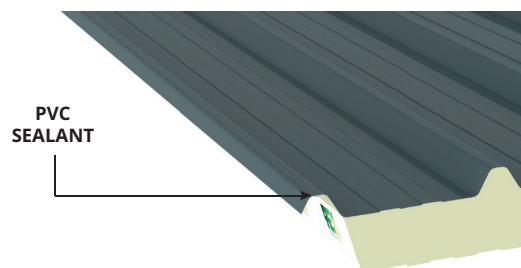
Coating*	Steel	Thicknesses**	
		0,5	0,63
Polyester IC 15 mu	Galvanised Steel quality S250 GD or better	■	■
Polyester 25 mu		■	■
Foodsafe 150 mu		■	■
Colorfarm 35 mu		■	

\*Available colors according standard colorchart which is available on request ■ = standard available

\*\*Other coatings / thicknesses on request available

#### Sealants

The REX SDW ROOF 4 sandwich panel is fitted with a soft semi-closed PVC foam sealant. This sealant is factory applied on the overlap of the steel external sheet (side lap). With a compression rate of 30% a sufficiently airtight joint will be created.



### QUALITY AND GUARANTEE

#### Quality

The REX SDW ROOF 4 product is CE marked according EN14509:2013. The quality of our products is under FPC (Factory Production Control) continuously monitored in our own testlaboratory. These procedures are secured under ISO9001.

#### Certification

The REX SDW ROOF 4 panels can be supplied including the following certificates / quality marks:



#### Guarantee

All products from REX Panels & Profiles come with a standard 10-year product warranty. An extended warranty is available on request under certain conditions. Some coating systems offer an additional (longer) guarantee on the durability of the external and / or internal sheet. For more information or the warranty conditions you can consult the website or contact our sales department.

### PACKAGING AND TRANSPORT

#### Packaging

The REX SDW ROOF 4 sandwich panels are stacked interleaved on OSB boards and PS blocks and fully wrapped in foil to create solid and manageable bundles. On request the panels can be stacked with all profiled external sheets up or down.

	Number of panels per pack												
Core thickness	20	30	40	50	60	70	80	90	100	110	120	130	160
Stacked interleaved	28	22	18	16	14	12	10	10	8	8	8	6	6
Stacked crowns up or down	20	17	15	13	11	10	9	9	8	7	7	7	6

#### Transport

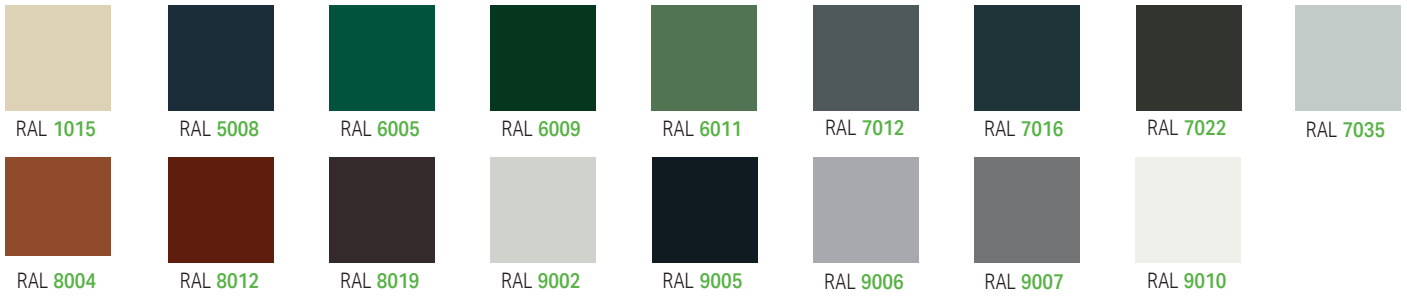
All deliveries are made via standard road transport to the construction site (maximum standard length 13600 mm). The trucks must be unloaded by the customer with suitable lifting equipment. Transport of longer lengths (up to 21300 mm) and / or self-unloaders is also possible on request.

# PRODUCT DATA SHEET

REX SDW **ROOF 4**

## COLOR CHART

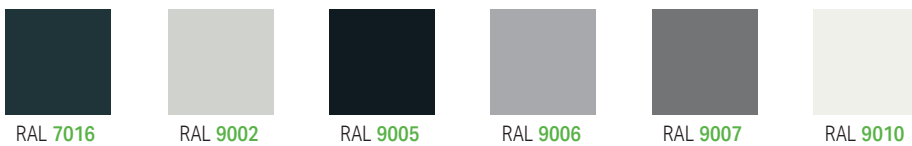
### Polyester 25 µ in 0,5/0,63 mm



### Polyester 25 µ in 0,75 mm



### REXPUR 60 µ in 0,5/0,63/0,75 mm



### Plastisol 200 µ in 0,5 /0,63 mm



### Rooftile colors in polyester 25 µ / 0,5 mm



### Rooftile colors in 40 µ mat / 0,5 mm



### Rooftile colors in plastisol 200 µ / 0,5 mm





**LOCATION 1**

Z.I. Tournai Ouest  
Rue du mont des Carliers 4  
7522 Blandain  
VAT BE 0473.823.026

**LOCATION 2**

Z.I. Tournai Ouest  
Rue du Grand Carex 7  
7503 Froyennes  
VAT BE 0473.823.026

**CONTACT**

T: +32 69 44 66 80  
F: +32 69 44 66 81  
E: [info@rexpanels.com](mailto:info@rexpanels.com)