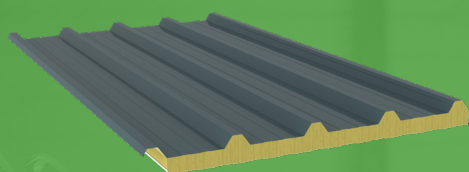


PRODUCT DATA SHEET

REX SDW **ROOF 4 MW**

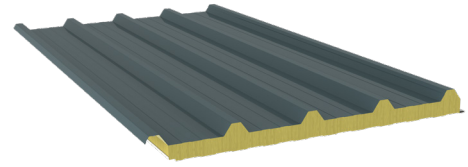


PRODUCT DATA SHEET

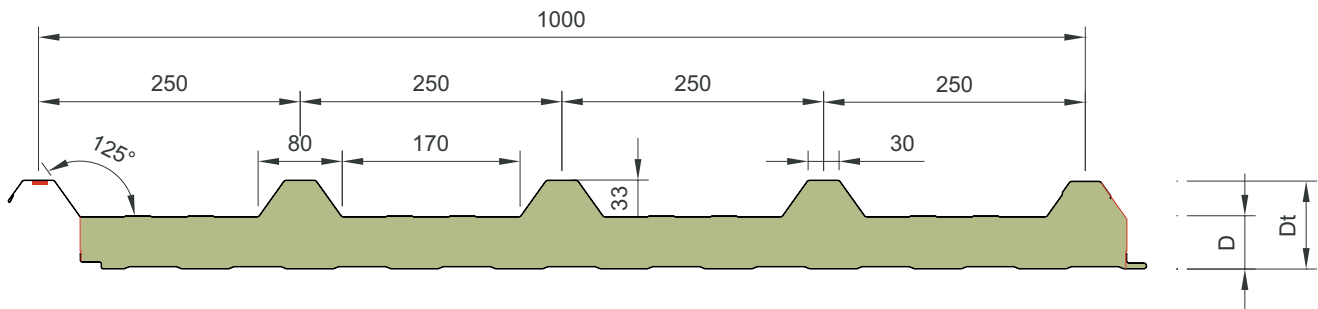
REX SDW ROOF 4 MW

APPLICATIONS

The REX SDW ROOF 4 MW sandwich panel has a steel trapezoidal profiled external sheet and a light linear profiled steel internal sheet. The rigid foam core is standard made of mineral wool (MW) and this product can be used for building with roof pitches of 4° or more after deflection.



SECTION



PROPERTIES

Thickness [D]	Overall Thickness [Dt]	Weight	U-value
[mm]	[mm]	[kg/m ²]	[W/m ² .k]
50	83	17,1	0,77
60	93	18,1	0,66
80	113	20,1	0,50
100	133	22,1	0,41
120	153	24,1	0,35
150	183	27,1	0,28
180	213	30,1	0,24
200	233	32,1	0,21

The mentioned insulation values in this table are based on calculations according NEN-EN14509:2013

PRODUCT DATA SHEET

REX SDW **ROOF 4 MW**

Fire

Property	Standard	Certification Standard	Result	Field of application
Reaction to Fire	EN ISO 11925-2:2010 ignitability	EN 13501-1:2007 Fire classification of construction products and building elements - Part 1	A2-S1-D0	All thicknesses
	EN 13501-1:2017 reaction to fire			
Fire resistance	EN1365-2: determining the fire resistance of roof constructions	EN 13501-2:2007 Fire classification of construction products and building elements - Part 2	REI30	> 60 mm thickness
			REI90	> 80 mm thickness
			REI120	> 100 mm thickness

*European fire tests project running, certification on request



Environmental

For further information on environmental issues please contact the sales department of REX Panels & Profiles.

Air Leakage

When correctly installed the air leakage of the REX SDW ROOF 4 MW sandwich panels is approx. 3,5 m³/hour/m² @ 50 pa. Under normal environmental conditions this is tight enough to prevent condensation or unacceptable air leakage. If necessary (i.e. coldstore applications) the airtightness can be improved by gun applied sealing the panel to panel joints using silicon mastic.

Acoustic

Indicative octave band sound Insulation Index (R) in [dB] / [Hz]							
63	125	250	500	1000	2000	4000	8000
-	17	20	30	21	39	51	56
Sandwich MW panels have a weighted sound reduction of approx. 30 dB(A) (depending on thickness, example at 100 mm thickness)							

PRODUCT DATA SHEET

REX SDW ROOF 4 MW

MEASUREMENTS

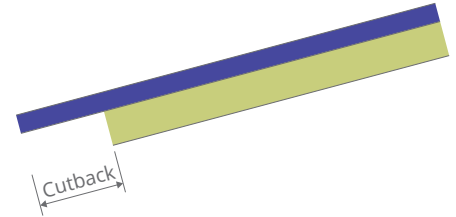
Available lengths

Standard lengths	2500 to 13600 mm
Longer lengths*	13600 to 15000 mm
Shorter lengths*	Below 2500 mm

*Non-standard lengths are available on request and subjected to a surcharge

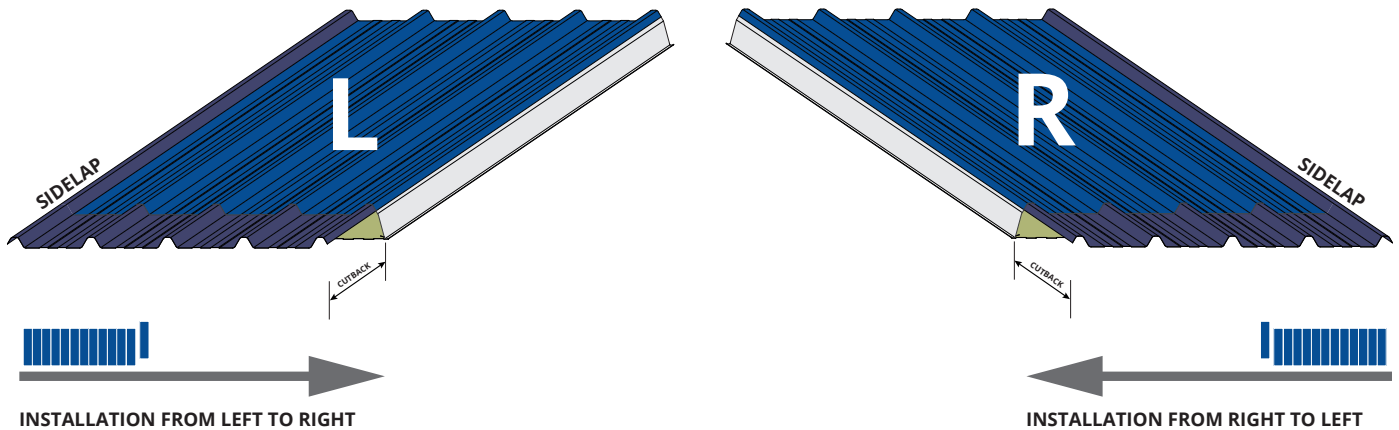
Panel End Cut Back

Standard Cut Back Eaves	100 mm
Standard Cut Back Endlap	200 to 300 mm
Minimum Cut Back	2 mm
Maximum Cut Back	350 mm



Orientation

Sandwich roof panels can be installed from left to right or from right to left. REX SDW ROOF 4 MW panels are standard produced and supplied with a sidelap on the right (see illustration). If a different installation direction is required this can be mentioned during the order process.



Tolerances

Length	$L \leq 3000$ mm	-5 mm	+5 mm
	$L \geq 3000$ mm	-10 mm	+10 mm
Thickness	$D \leq 100$ mm	-2 mm	+2 mm
	$D \geq 100$ mm	-2%D	+2%D
Cover width		-2 mm	+2 mm
Squareness		-6 mm	+6 mm

Other product- and material tolerances according EN14509:2013

PRODUCT DATA SHEET

REX SDW ROOF 4 MW

MATERIALS

Core material

The REX SDW ROOF 4 MW sandwich panels are produced with a mineral wool (MW) core material with a density of 100 kg/m³.

External sheet

The profiled external sheet is standard available in the following materials and coating systems:

Coating*	Steel	Thicknesses**	
		0,63	0,75
Polyester 25 mu	Galvanised Steel quality S280 GD or better	■	■
Plastisol 200 mu		■	■
REX PUR 60 mu		■	■

*Available colors according standard colorchart which is available on request ■ = standard available

**Other coatings / thicknesses on request available

Internal sheet

The profiled internal sheet is standard available in the following materials and coating systems:

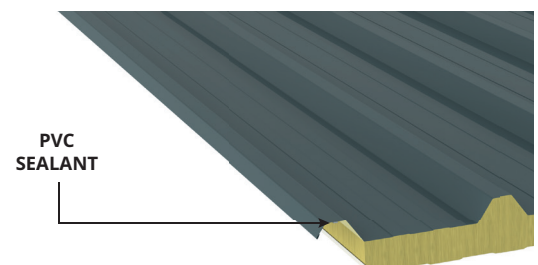
Coating*	Steel	Thickness**
		0,5
Polyester IC 15 mu	Galvanised Steel quality S250 GD or better	■
Polyester 25 mu		■
Foodsafe 150 mu		■
Colorfarm 35 mu		■

*Available colors according standard colorchart which is available on request ■ = standard available

**Other coatings / thicknesses on request available

Sealants

The REX SDW ROOF 4 MW sandwich panel is fitted with a soft semi-closed PVC foam sealant. This sealant is factory applied on the overlap of the steel external sheet (side lap). With a compression rate of 30% a sufficiently airtight joint will be created.



QUALITY AND GUARANTEE

Quality

The REX SDW ROOF 4 MW product is CE marked according EN14509:2013. The quality of our products is under FPC (Factory Production Control) continuously monitored in our own testlaboratory. These procedures are secured under ISO9001.

Certification

The REX SDW ROOF 4 MW panels can be supplied including the following certificates / quality marks:



Guarantee

All products from REX Panels & Profiles come with a standard 10-year product warranty. An extended warranty is available on request under certain conditions. Some coating systems offer an additional (longer) guarantee on the durability of the external and / or internal sheet. For more information or the warranty conditions you can consult the website or contact our sales department.

PACKAGING AND TRANSPORT

Packaging

The REX SDW DAK 4 MW sandwich panels are stacked interleaved on OSB boards and PS blocks and fully wrapped in foil to create solid and manageable bundles. On request the panels can be stacked with all profiled external sheets up or down.

	Number of panels per pack							
Core thickness	50	60	80	100	120	150	180	200
Stacked interleaved	16	14	10	8	8	6	4	3
Stacked crowns up or down	13	11	9	8	7	6	4	3

Transport

All deliveries are made via standard road transport to the construction site (maximum standard length 13600 mm). The trucks must be unloaded by the customer with suitable lifting equipment. Transport of longer lengths (up to 15000 mm) and / or self-unloaders is also possible on request.



LOCATION 1

Z.I. Tournai Ouest
Rue du mont des Carliers 4
7522 Blandain
VAT BE 0473.823.026

LOCATION 2

Z.I. Tournai Ouest
Rue du Grand Carex 7
7503 Froyennes
VAT BE 0473.823.026

CONTACT

T: +32 69 44 66 80
F: +32 69 44 66 81
E: info@rexpanels.com